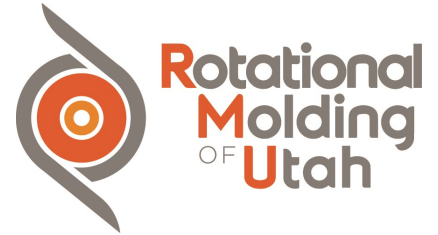


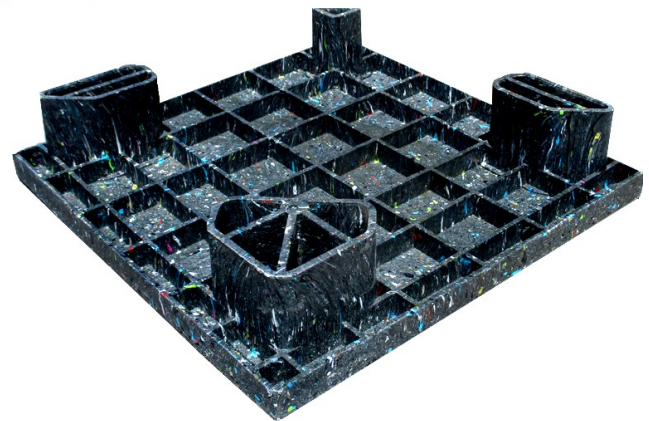
The Hercules

Nestable, 24X24 Display Pallet



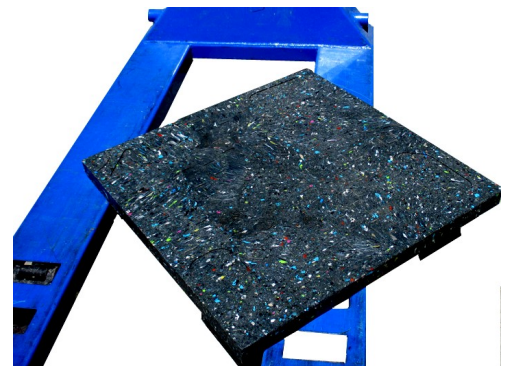
(435) 734-9920

info@RMUtah.com



- Easily recognized as an environmentally friendly product
- Solid top surface for display stability and support
- Robust design that will withstand heavy use and provide a long life
- Extreme impact durability
- Satisfies ISPM 15 requirements

Unique foot design to ensure easy access for and stability on a pallet jack!



SPECIFICATIONS

Dimensions			Weight	Load Capacity*			Truckload Qty.
Length	Width	Height	13.5 lbs	Static	Dynamic	Edge Racking	2184
24"	24"	5"		5,000	1,200	N/A	

*Rated load capacities are intended for a guideline only and are tested under optimum load conditions. Actual product performance will vary with application. Specifications are subject to change without notice.

PLASTIC PALLETS

